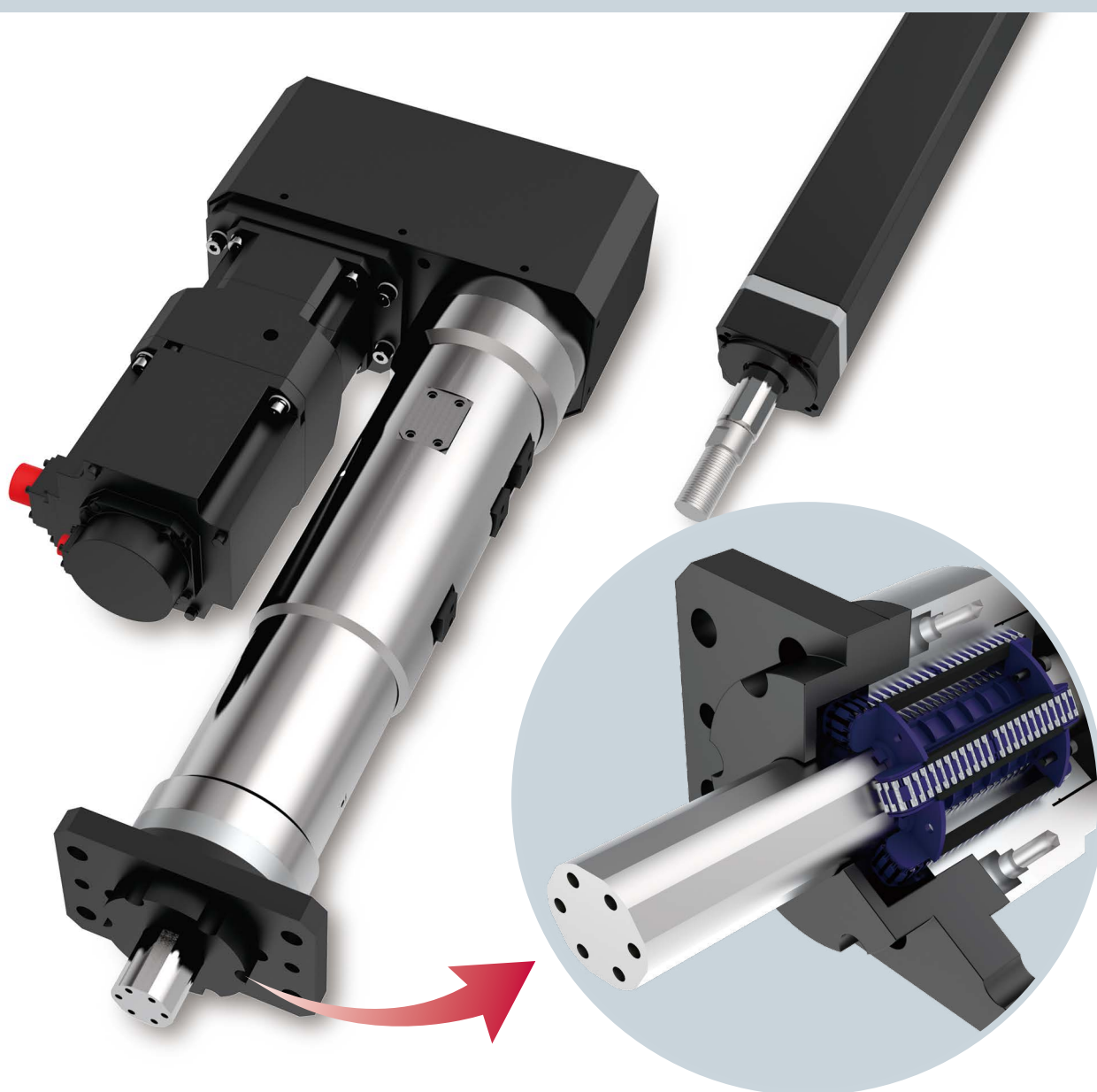


NEW

# Mctuator<sup>®</sup> Series

Super rigid Actuator with McGuide by the needle and polygonal shaft combination

www.mysamick.com

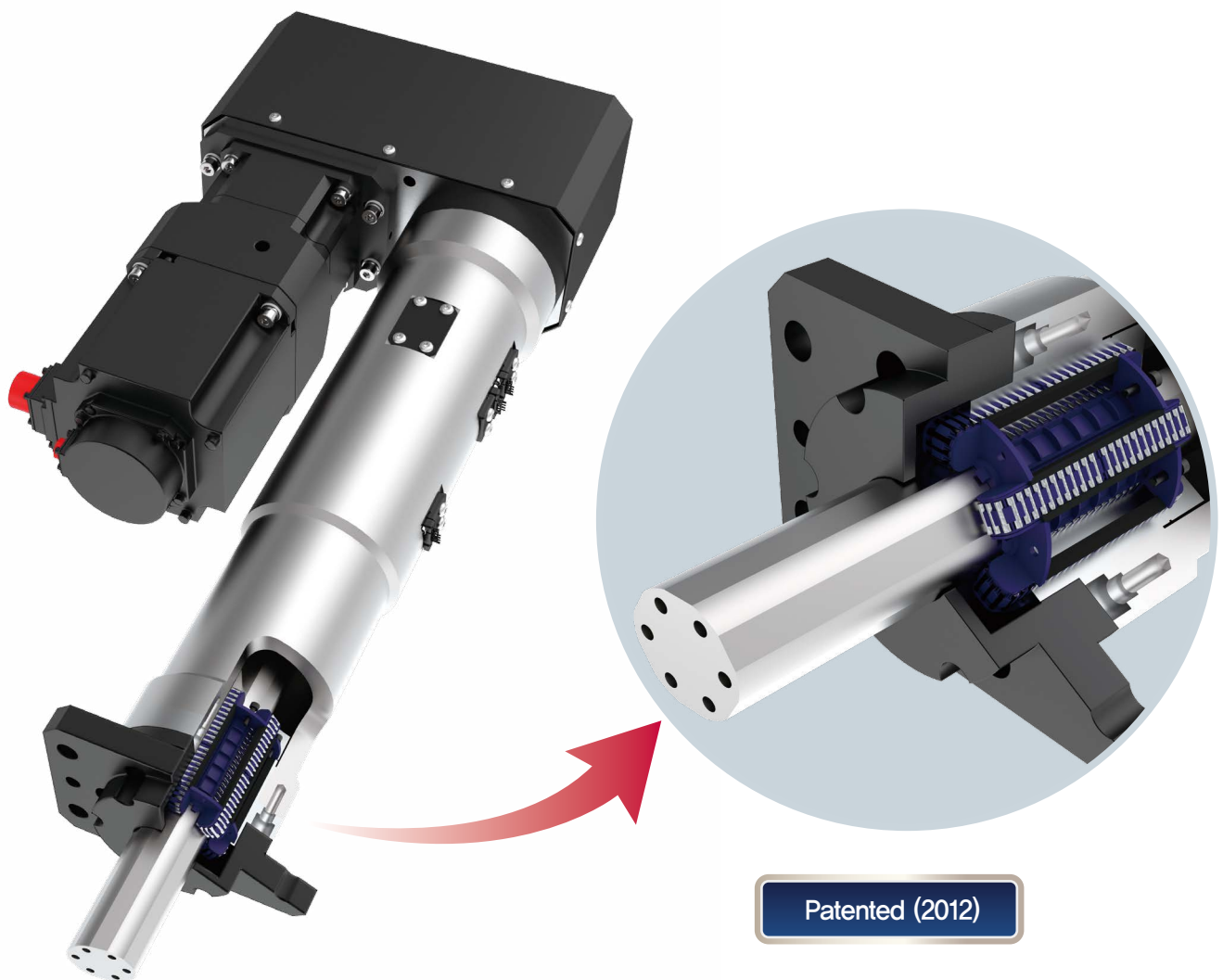


*High-speed continuous operation /  
high rigidity / high precision*

# Mctuator® – P Series

Mctuator® P Series Actuator provides reliable accuracy, high rigidity, and powerful thrust with minimum preload.

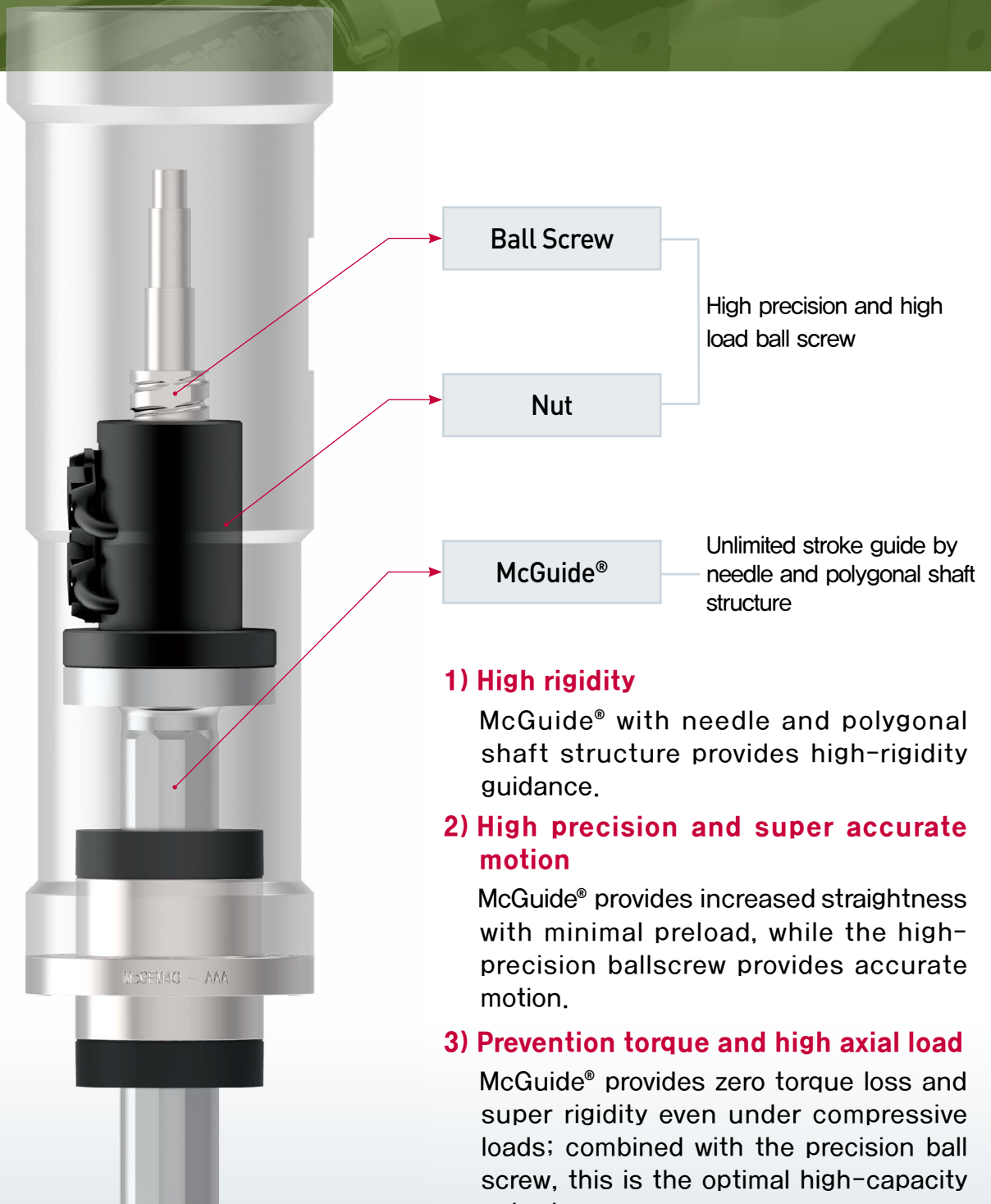
## Overview



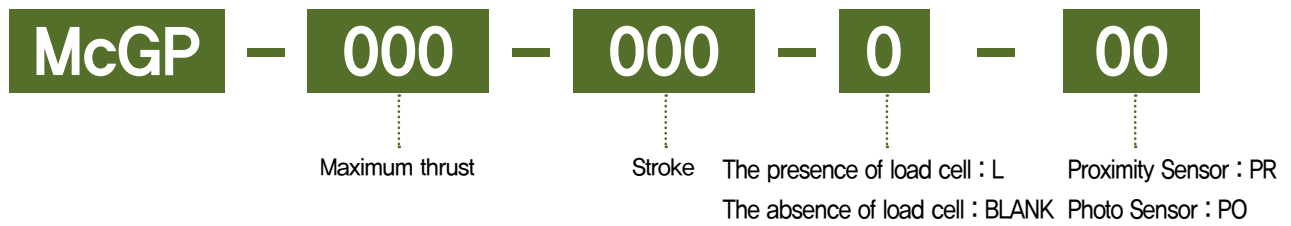
Mctuator-P Series using a high-capacity ball screw and the McGuide-needle and polygonal shaft guide-provides rigidity, versatility, productivity, high precision, and low noise.

## Features

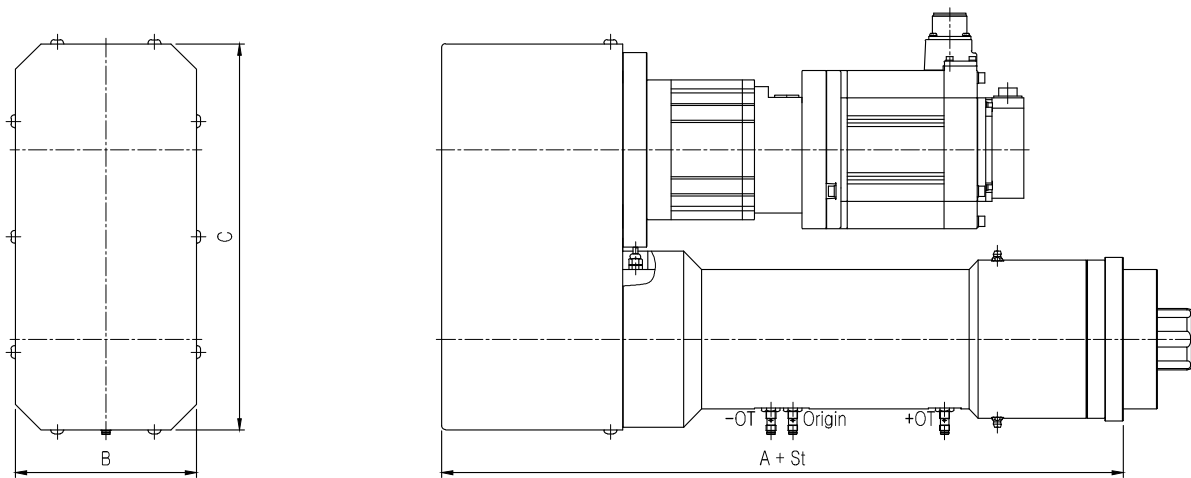
- Energy-efficient, compact design is ideal for high-production manufacturing.
- Electric brake designed to safely prevent rod dropping.
- Super-precision load cell provides a high degree of accuracy.



## Part number



## Dimensions and specification



Items	McGP - 005	McGP - 010	McGP - 030	McGP - 050	McGP - 100
Maximum thrust ( kgf)	500	1,000	3,000	5,000	10,000
Continuous rated thrust (kgf)	250	500	1,500	2,500	5,000
Speed (mm/sec)	165/330	165/330	110/160	80/120	75/110
Max Stroke (mm)	~ 300	~ 300	~ 300	~ 200	~ 200
Straightness (mm)	10 $\mu$ m/100mm ( Free Load State)				
Repeat position accuracy (mm)	$\pm 0.01$				
Repeated load accuracy	Less than 1.5%				
Electromagnetic brake (N · m)	—	—	8	30	50
Recommended motor (KW)	0.4	0.75	1.5	2.0	3.5
Lead of ball screw (mm)	$\Phi 15 \times 10$	$\Phi 20 \times 10$	$\Phi 32 \times 10$	$\Phi 40 \times 10$	$\Phi 50 \times 16$
Reduction ratio	1/3	1/3	1/3	1/5	1/7
Applied guide	McGFM32	McGFM40	McGFM50	McGFM80	McGFM80
Outer dimensions ( A * B * C )	308.5 * 92 * 196	337 * 115 * 253	461 * 150 * 318	593 * 190 * 385	700 * 235 * 455

Note 1. Continuous rated thrust is less than 120% of the motor load rate .

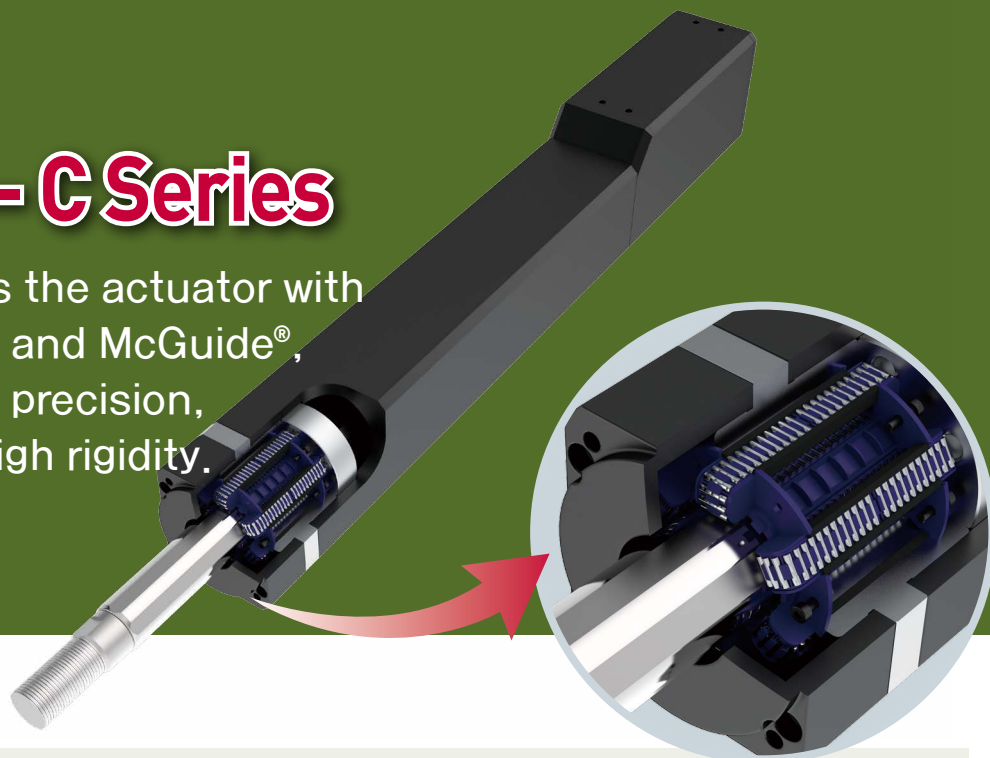
Note 2. Stroke is the distance from the origin to + OT.

## Application



# Mctuator® – C Series

Mctuator® Cseries is the actuator with precision ball screw and McGuide®, and it provides high precision, low pre-load, and high rigidity.



## Part number

**McGC**

–

**000**

–

**000**

–

**00**

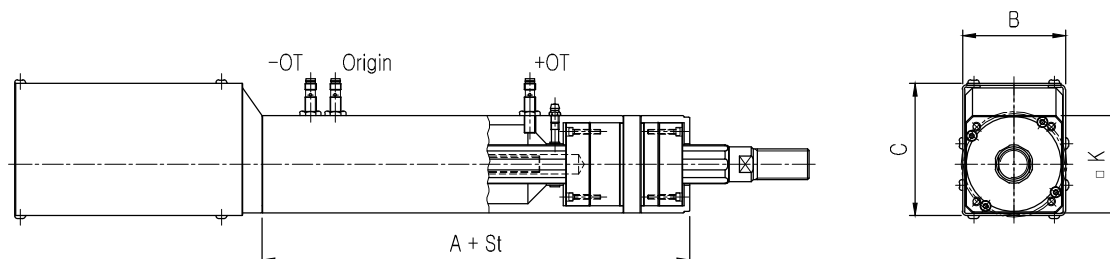
Diameter of guide

Stroke

Proximity sensor : PR

The absence of sensor : BLANK

## Dimensions and specification



Items	McGC – 028				McGC – 032	
Maximum thrust ( kgf)	110	55	220	110	415	210
Continuous thrust (kgf)	35	20	75	35	140	70
Maximum speed (mm/sec)	500	1000	500	1000	550	1100
Max Stroke (mm)	~ 400				~ 400	
Straightness (mm)	10μm/100mm (Free Load State)					
Repeat position accuracy (mm)	±0.01					
Recommended motor (KW)	0.2		0.4		0.75	
Ball screw	Ø12×10	Ø12×20	Ø12×10	Ø12×20	Ø15×10	Ø15×20
Applied guide	McGFM28				McGFM32	
Outer dimensions ( A * B * C )	208 * 74 * 95.5				216.5 * 84 * 102.5	
□ K	70				80	

Note 1. Continuous rated thrust is less than 100% of the motor load rate .

Note 2. Stroke is the distance from the origin to + OT.



## Customer's Specification available

Application example #1



Application example #2



Application example #3

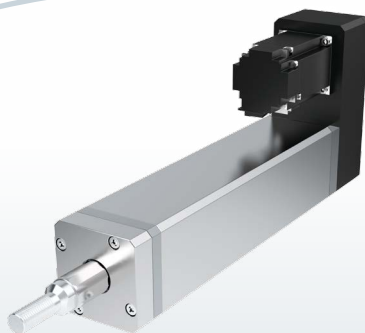


Note 1) Servo motor and amplifier are for the customer's specifications.

Note 2) For the special specification, please contact to SAMICK

## Uses

Ultra-precision  
transfer unit



Aligning unit

# Mctuator<sup>®</sup> Series



Copyright of all the contents of this article is owned by Samick Precision Ind. Co., Ltd.  
The information contained in this document may be subject to change without prior notice.

Published by | Samick Precision Ind. Co., Ltd.

 **SAMICK PRECISION IND. CO., LTD.**

39, Seongseogongdannam-ro, 32-gil, Dalseo-Gu, Daegu, Korea (South)

E-mail | [marketing@mysamick.com](mailto:marketing@mysamick.com) Web site | [www.mysamick.com](http://www.mysamick.com)

Telephone | +82-53-666-7100 Fax | +82-53-583-4669